

BIM & DIGITAL
AWARD 23

ASSOBIM

CLUSTER
BUILD
EDILIZIA E COSTRUZIONI



L'hub delle idee innovative per la trasformazione digitale del settore delle costruzioni



Category: BIM Initiative of the Year

OViewer - multi-project and multi-format openBIM viewer (IFC, FBX, OBJ, LAS, JSON, ...)

(Arch. Daniele Ravagni – Studio di Architettura)

Architect

BIM Craftsman

*Research and
Development
to
operationalise
theories*

officina **DV** [®]
_virtuale
Servizi Digitali Avanzati
Advanced Digital Services

Oviewer is the answer to the concrete needs of an Architectural Firm heavily involved in the digitisation of the AECO sector and can be used in a bottom-up approach for the benefit of all players in the sector, regardless of the size of the project, the firm or the company.

3 on 3

2023





COMUNE di SIENA
Urban Planning and UNESCO
Site Office

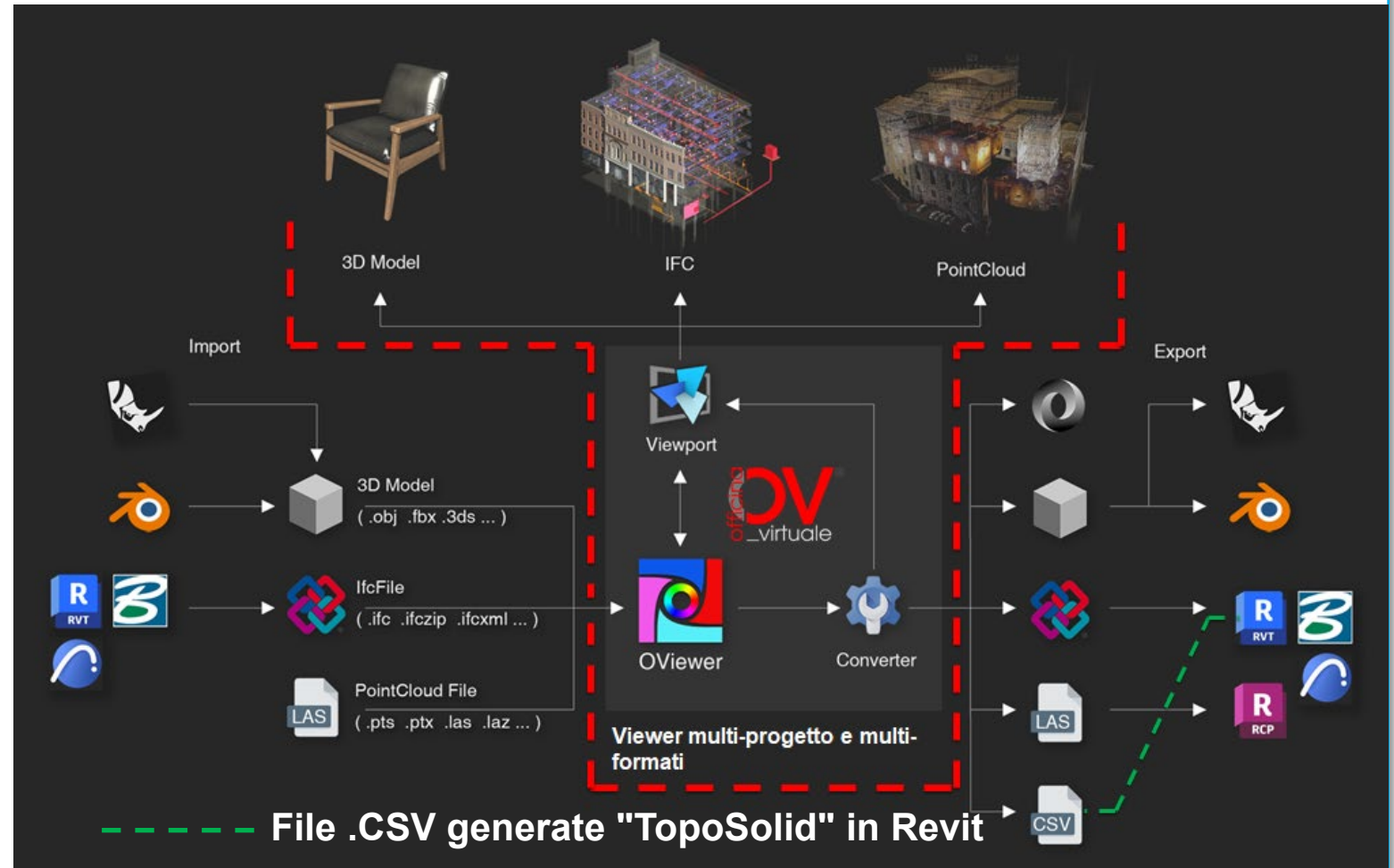
PATRONAGE
of the OViewer
presentation at
the BIM&DIGITAL
Award 2023



What is OViewer?

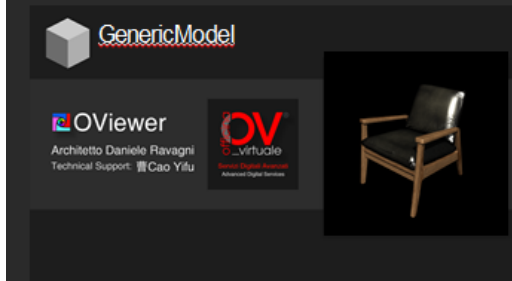
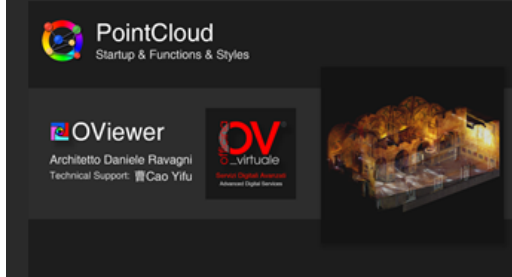
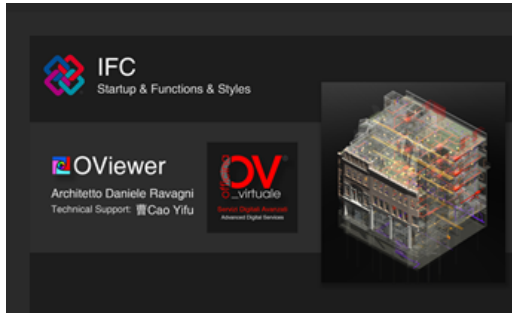
It is unique...

3D visualisation software for openBIM .IFC federated projects, for .LAS Point Clouds and for various generic 3D model standards (OBJ, FBX, STL, ...) and all this ALSO **SIMULTANEOUSLY !!!**



Why OViewer?

On-site Application / Made to Communicate better / High Graphic and Visual Quality / Fast and Easy to Use



Nome	Data	Dimensione
Revit2024 Samplefile - Snowdon Towers Sample Architectural Revit2024 Samplefile - Snowdon Towers Sample Architectural.ifc	18/05/2023 17:35	84 007 KB
Revit2024 Samplefile - Snowdon Towers Sample Electrical Revit2024 Samplefile - Snowdon Towers Sample Electrical.ifc	18/05/2023 17:36	15 581 KB
Revit2024 Samplefile - Snowdon Towers Sample Facades Revit2024 Samplefile - Snowdon Towers Sample Facades.ifc	18/05/2023 17:35	11 456 KB
Revit2024 Samplefile - Snowdon Towers Sample HVAC Revit2024 Samplefile - Snowdon Towers Sample HVAC.ifc	18/05/2023 17:35	18 937 KB
Revit2024 Samplefile - Snowdon Towers Sample Plumbing Revit2024 Samplefile - Snowdon Towers Sample Plumbing.ifc	18/05/2023 17:35	51 331 KB
Revit2024 Samplefile - Snowdon Towers Sample Site Revit2024 Samplefile - Snowdon Towers Sample Site.ifc	18/05/2023 17:35	3 259 KB
Revit2024 Samplefile - Snowdon Towers Sample Structural Revit2024 Samplefile - Snowdon Towers Sample Structural.ifc	18/05/2023 17:35	4 317 KB

Totale file federato: 188 888 Kb

Files di Esempio di Revit

LAS_CLASSIFY.las	28/04/2023 20:00	Stato layer...	3,833,049 KB
------------------	------------------	----------------	--------------

Totale file: 3 833 049 Kb

LiDAR Mura Medicee di Siena

Palazzo Pubblico di Siena

nuvola di punti Palazzo Comunale Rev.2.las	04/05/2023 00:50	Stato layer...	13,496,457 KB
--	------------------	----------------	---------------

Totale file: 13 496 457 Kb

Siena_Walls	b1_b2_fixed.fbx	24/03/2023 14:59	3D Object	415,881 KB
0_SOFT	b3_b4_fixed.fbx	24/03/2023 15:00	3D Object	189,638 KB
_Versioni OLD ViewerBIM	b5_b6_fixed.fbx	25/03/2023 08:03	3D Object	452,020 KB
FBX test	b7_b8_b9_fixed.fbx	24/03/2023 15:01	3D Object	347,145 KB

Totale gruppo file: 1 404 684 Kb

Siena Mura Medicee Ambiente circostante (mesh)

Halfway... between Revit and Photoshop! (registered trademarks)

Overview is for:

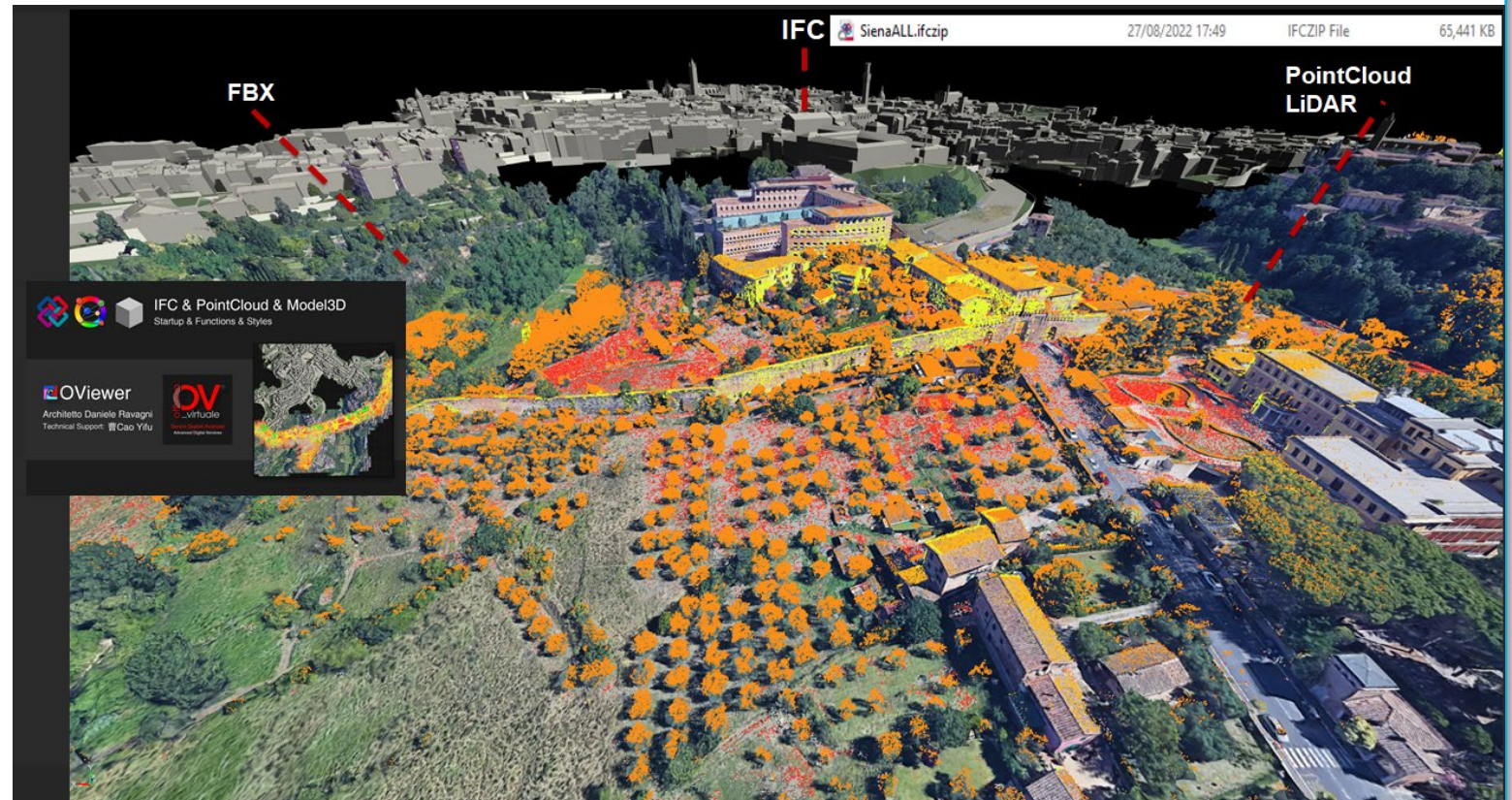
To better study and analyse multiple projects in .IFC format, also combined with Point Clouds and other 3D models, both in the pre-design phase for quick conceptual hints or "virtual mock-ups" study, and in the midst of design for exchanges with colleagues and client, and in the post-design phase to communicate to potential clients and various stakeholders;

Create meshes from LiDAR point cloud classifications, to analyse them with various parameters (e.g. Intensity) of different colours and export them in .CSV format, to obtain terrain models in BIM software (e.g. TopoSolid in Revit 2024);

Communicate with clients through visualisations and animations of IFC models and contextualised Point Clouds in an appealing way, easier to understand even for non-technical people, for greater involvement in the Project;

What can be done with **OViewer**?

Federate project models and as-built models in .IFC format, insert generic models (.OBJ, .FBX, etc.), merge and integrate them with Point Clouds (.LAS) from object and/or context survey.

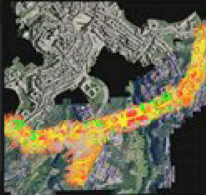


IFC

IFC & PointCloud & Model3D
Startup & Functions & Styles

OViewer

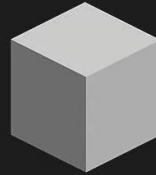
Architetto Daniele Ravagni
Technical Support: 曹Cao Yifu



FBX

PointCloud
LiDAR





IFC & PointCloud & Model3D

Startup & Functions & Styles

VIDEO

YouTube link:
set highest
resolution

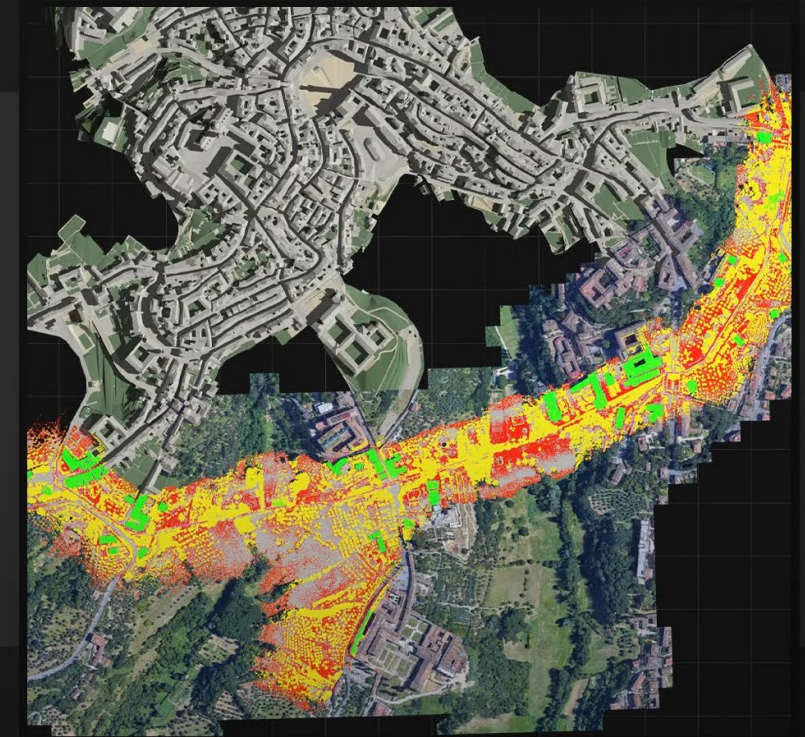
 **OVviewer**

Architetto Daniele Ravagni

Technical Support: 曹Cao Yifu

officina **OV**
_virtuale

Servizi Digitali Avanzati
Advanced Digital Services



What can be done with **OViewer**?

Display Point Clouds clearly and meaningfully by choosing to select a certain part of the Point Cloud to be loaded or, once loaded, act on the number and size of points to be displayed.

File Path	Size	Loaded points	Rendered points	Physical Memory	Resource Usage
E:\PointCloud\nuvola di punti Palazzo Comunale.las	14.69 GB	375,600,000	30,897,885	63.93 GB	8.23%
E:\PointCloud\nuvola di punti Palazzo Comunale.las	14.69 GB	375,600,000	50,387,309	63.93 GB	13.41%

Property Control



PointCloud

Startup & Functions & Styles

VIDEO

YouTube link:
set highest
resolution

 **OVviewer**

Architetto Daniele Ravagni

Technical Support: 曹Cao Yifu

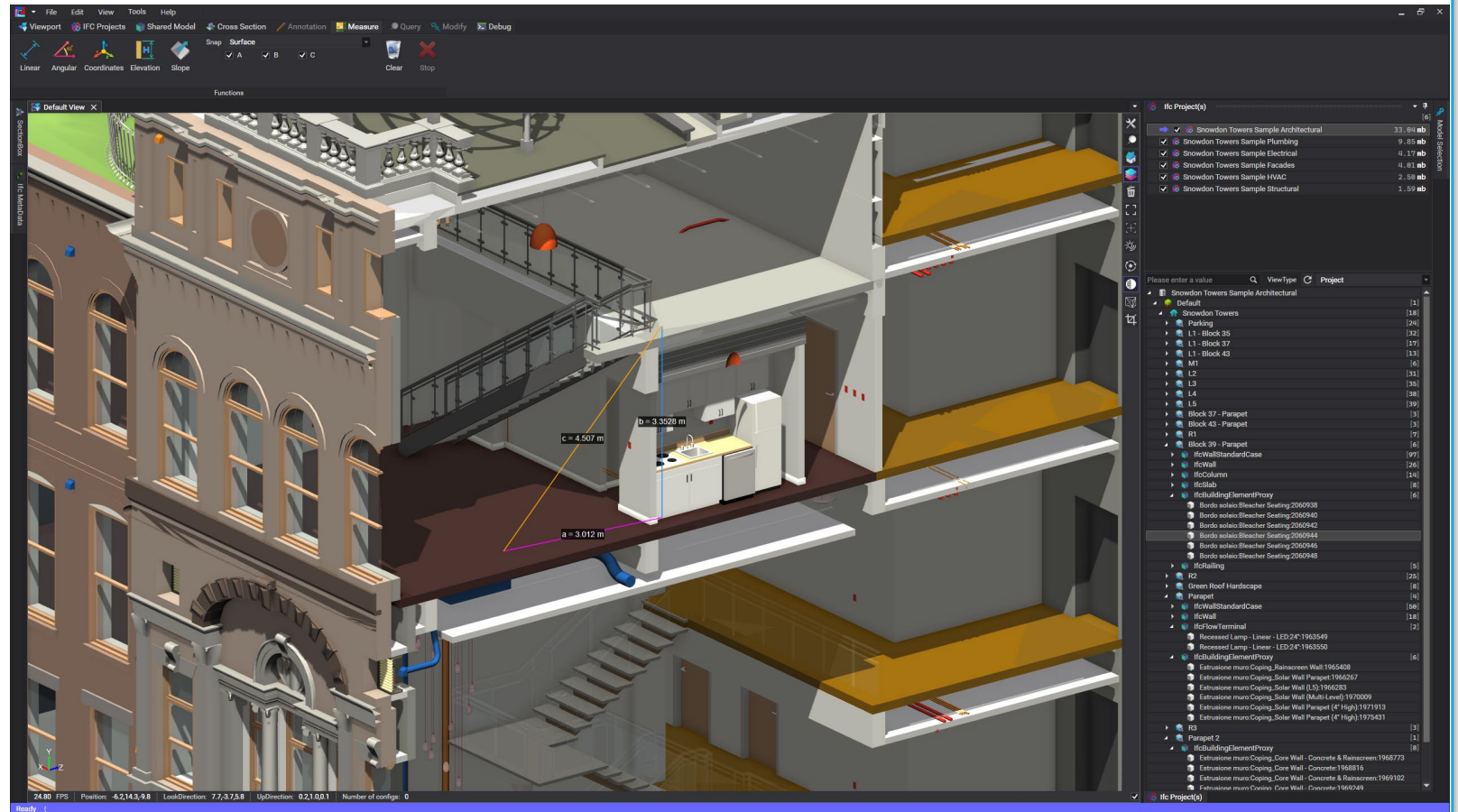
officina **OV**[®]
_virtuale

Servizi Digitali Avanzati
Advanced Digital Services



What can be done with **O**Viewer?

Create animations, save and export high-quality frames and orthographic views. Query, analyse, annotate, measure and "*visit*" virtual environments in various 3D and Point Cloud formats.





IFC

Startup & Functions & Styles

VIDEO

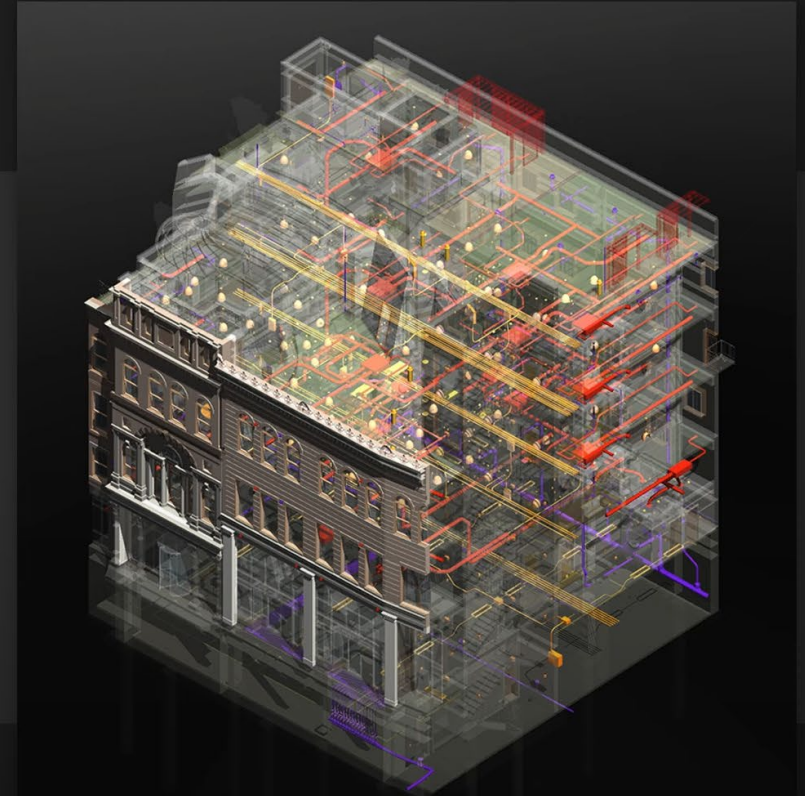
YouTube link:
set highest
resolution

 **OVviewer**

Architetto Daniele Ravagni
Technical Support: 曹Cao Yifu

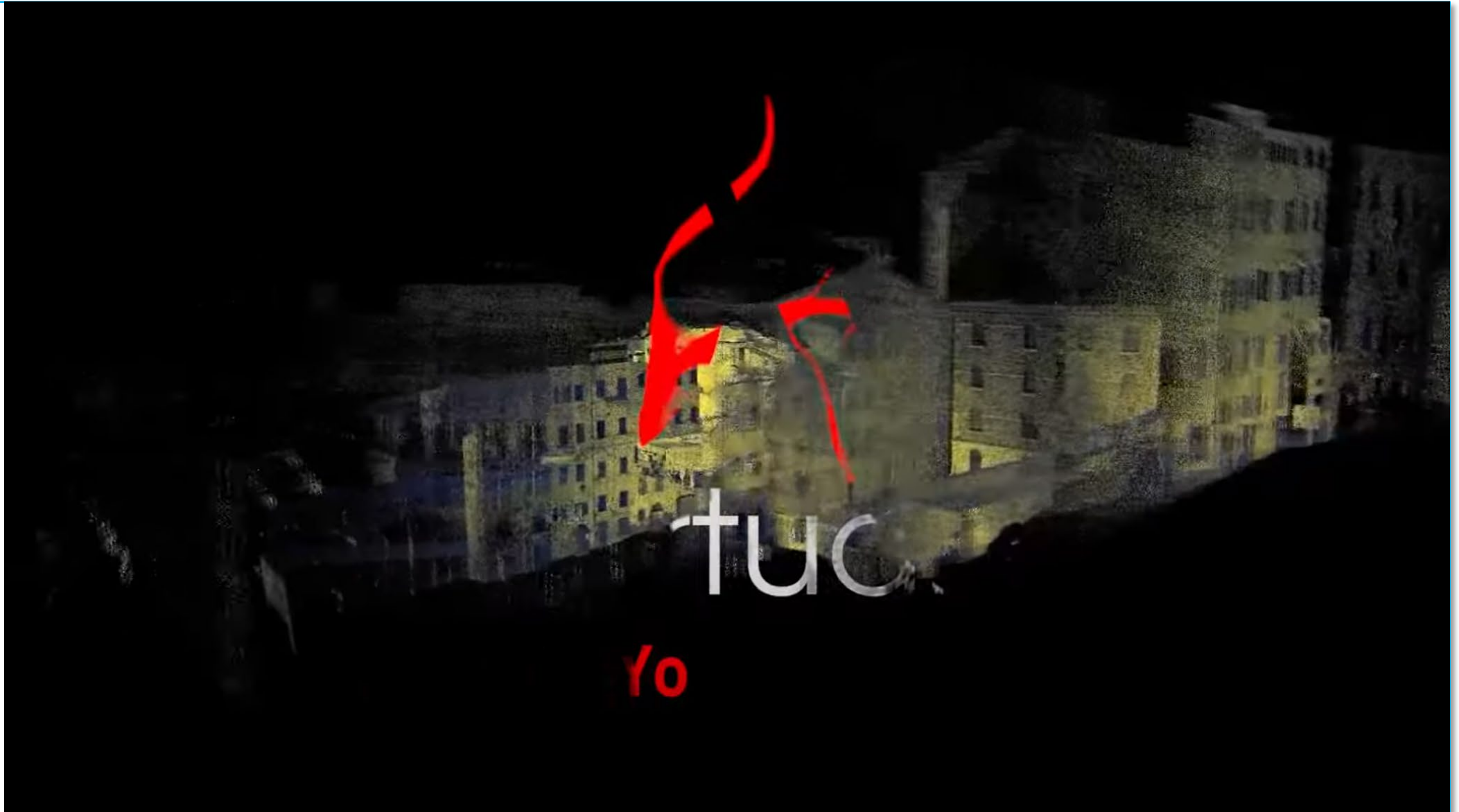
officina **OV**[®]
_virtuale

Servizi Digitali Avanzati
Advanced Digital Services



VIDEO

YouTube link:
set highest
resolution



FINAL OVERVIEW



THANK YOU FOR YOUR ATTENTION

email: daniele@ravagnistudio.it



+39 338 3265754
www.ravagnistudio.it